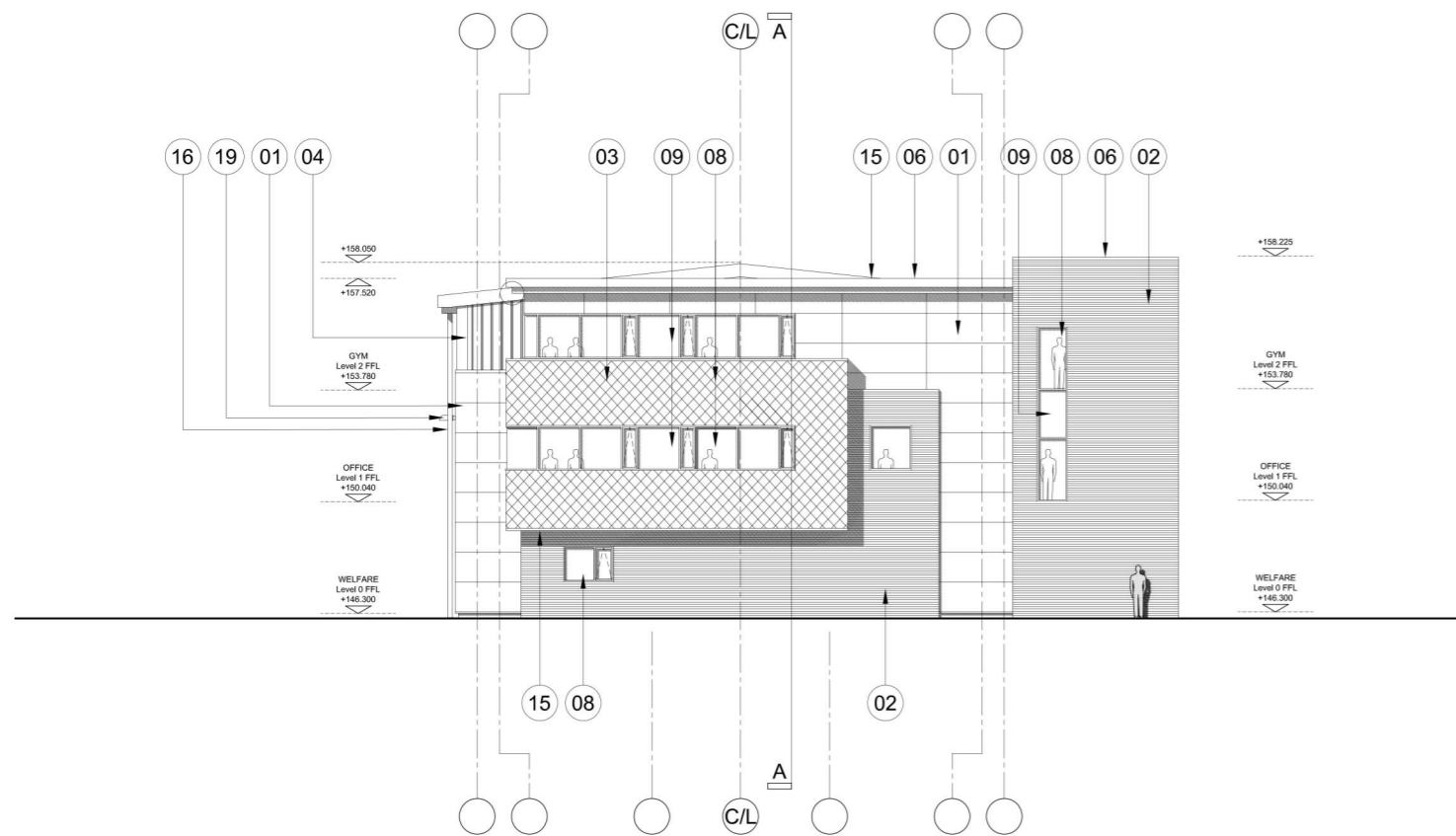
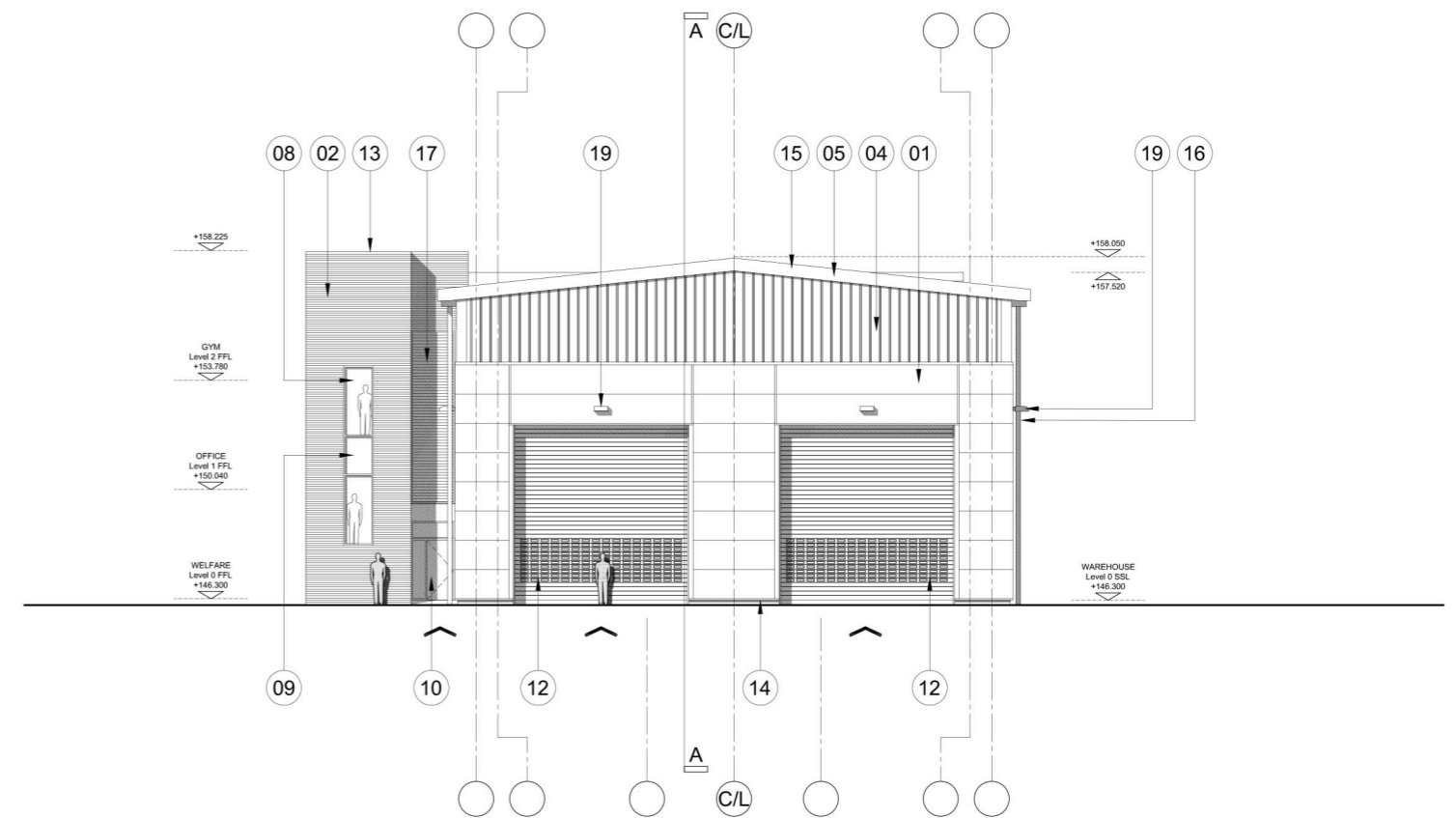


REV	DATE	DESCRIPTION	SIG
A	30.07.2021	Issued for Information	DR
P1	12.11.2021	Issued for Information	DR
B	02.12.2021	Issued for Information	DR
C	12.01.2022	Issued for Planning Application	DR



SOUTH EAST ELEVATION



NORTH WEST ELEVATION

MATERIALS KEY

- | | | | | |
|---|---|--|---|--|
| <p>01 Wall Cladding - Type 01
Architectural Wall Panel (Micro-Rib). Colour Ref: RAL 7000 Adventura, RAL 7012 Basalt & RAL 7016 Anthracite.</p> <p>02 Wall Cladding - Type 02
Architectural Wall Panel with mechanically fixed brick slip system. Colour Ref: Blue / Grey</p> <p>03 Wall Cladding - Type 03
Architectural Wall Panel with mechanically fixed bespoke metal shingle cladding. Colour Ref: RAL 7000, RAL 7012 & RAL 7016.</p> <p>04 Wall Cladding - Type 04
Insulated Wall Panel, (Trapezoidal) Colour Ref: P1 - RAL 7000 Adventura.</p> | <p>05 Roof Cladding - Type 01
Insulated Roof Panel, (Trapezoidal) Colour Ref: XL-Forte Coating in Goosewing Grey.</p> <p>06 Roof Cladding - Type 02
Membrane faced Insulated Wall Panel, Colour Ref: Anthracite.</p> <p>07 Roof Light
Trapezoidal Polycarbonate Rooflights. Colour Ref: Clear</p> <p>08 Curtain Walling / Windows
Aluminium Double Glazed Curtain Walling / Windows with glazing & glazed look-a-like panels. Frame Colour Ref: Anthracite RAL 7016</p> | <p>09 Glazed Look-a-like Panel.
Refer to No. 08</p> <p>10 Entrance Door
Aluminium Double Glazed Entrance Door. Frame Colour Ref: Anthracite RAL 7016</p> <p>11 Personnel Door.
Steel Insulated Door (with glazed vision panels where shown). Frame / Door Colour Ref: Anthracite RAL 7016</p> <p>12 Vehicle / Product Door
Insulated Roller Shutter Door. Frame / Door Colour Ref: Anthracite RAL 7016</p> | <p>13 PPC Flashing
Colour Ref: Anthracite RAL 7016</p> <p>14 PPC Cill Flashing
Colour Ref: Anthracite RAL 7016</p> <p>15 PPC Soffit / Eaves Cladding
with integrated flashings. Colour Ref: Anthracite RAL 7016</p> <p>16 PPC Aluminium RWP
Colour Ref: Anthracite RAL 7016</p> | <p>17 PPC Aluminium Louvers with integrated frames and flashings. Colour Ref: Anthracite RAL 7016</p> <p>18 Roof Mounted Photovoltaic Panels (PV)
Both Roof Type 01 and Type 02 will be designed, along with supporting structure to accommodate the installation of PV. (Location TBC)</p> <p>19 Security Light
Wall mounted LED security light fitting.</p> <p>20 Gutter
Insulated Membrane lined Gutter, Colour Ref: Grey</p> |
|---|---|--|---|--|

P L A N N I N G



BUILDING TWO
GLOBE WAY, BUCKLEY
NEW MANUFACTURING FACILITY
Elevations - Sheet 2

DATE JULY 2021
DRAWING NO. 0048 SK11-C
SCALE 1:250 @ A3