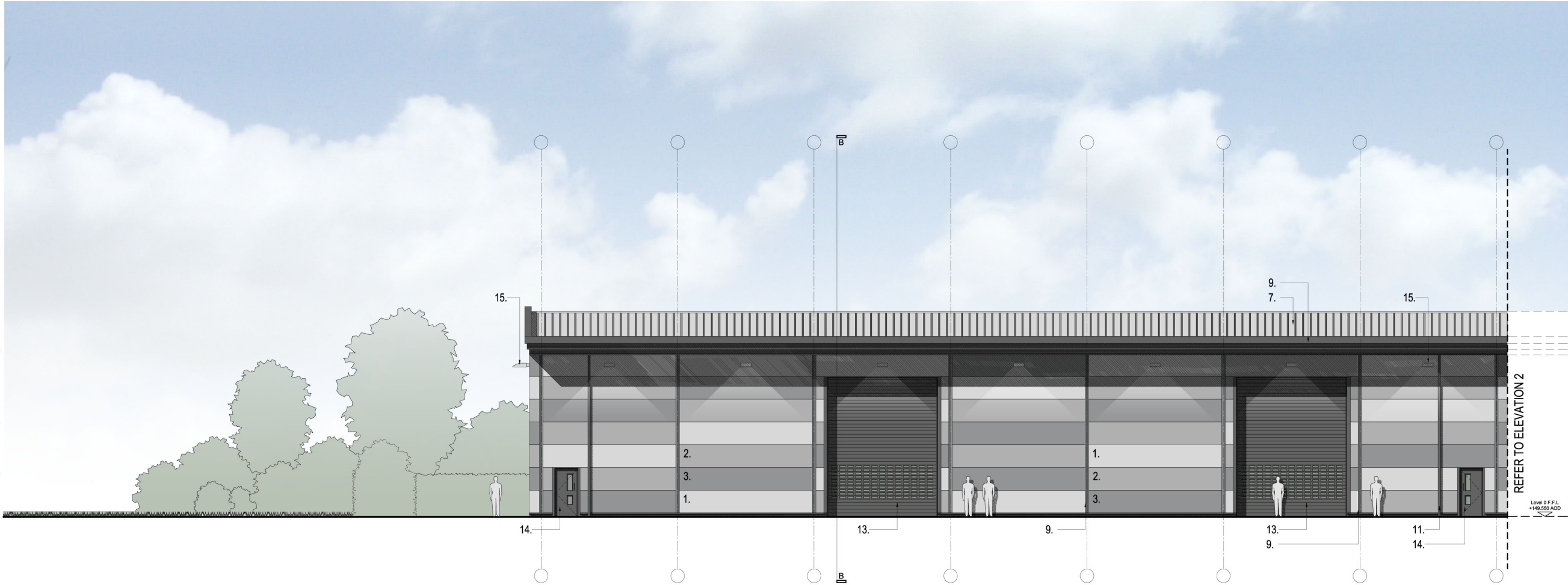


©Lester Fabrications 2017 - This design and drawing is the copyright of Lester Fabrications and may not be reproduced in any form whatsoever without prior written consent. Issue of the drawing does not impart any real or implied copyright licence.

This drawing must be read in conjunction with all architects, consultants, subcontractors and specialists drawings. Do not scale from this drawing.

REV	DATE	DESCRIPTION	SIG
A	OCT 17	Issued for Planning	DR

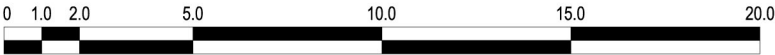


ELEVATION 3

MATERIAL KEY.

1. Steel composite cladding panel with flat finish, colour light grey.
2. Steel composite cladding panel with flat finish, colour mid grey.
3. Steel composite cladding panel with flat finish, colour dark grey.
4. Steel composite cladding panel with trapezoidal finish laid vertically, colour light grey.
5. Feature steel / aluminium composite cladding panel, laid vertically, colour silver.
6. Brick cladding system comprising of brick slip tiles fixed mechanically to insulated back panel, colour blue / slate.
7. Steel composite roof cladding panel with trapezoidal finish laid vertically, colour light grey.
8. Single ply membrane composite roof cladding panel, colour light grey.
9. Coated steel / aluminium flashings & cladding joints colour dark grey / anthracite.
10. Coated steel / aluminium soffit flashings, colour dark grey / anthracite.
11. Coated aluminium RWPs, colour dark grey / anthracite.
12. Curtain walling with double glazed units, opening lights, look-a-like panels, colour dark grey / anthracite.
13. Insulated roller shutter door with integrated vision panels, colour dark grey.
14. Insulated coated steel personnel door with integrated vision panels, colour dark grey.
15. External lighting.

SCALE BAR



PLANNING DRAWING



PROPOSED FACILITY
GLOBE WAY, BUCKLEY
ELEVATION 3

DATE	OCT 2017
DRAWING NO.	SK19A
SCALE	1:200